



OFFERS IN EXCESS OF

£1,250,000

Hayes Road

, BR2 9AE

PROPERTY SUMMARY

An impressive Edwardian detached home of some 2646 sq.ft situated on this prime residential road just a short distance from Bromley South Station and Bromley town centre. Sitting on a sizeable plot that boasts a generous driveway with mature shrubs and vast rear garden extending to approximately 125' with an array of flower borders, mature trees and shrubs. The property is arranged over three floors and offers well proportioned accommodation to include a solid oak award winning architect designed conservatory, with many original features to include fireplaces, coving, centre roses, doors, door furniture and original parquet flooring. We strongly advise your internal inspection. EPC: D

COUNCIL TAX - G
Construction - Traditional
Mains Services - Yes
Heating System - Gas radiators
Broadband - Yes
Mobile coverage - Yes
Restrictive covenants - Yes

5



2



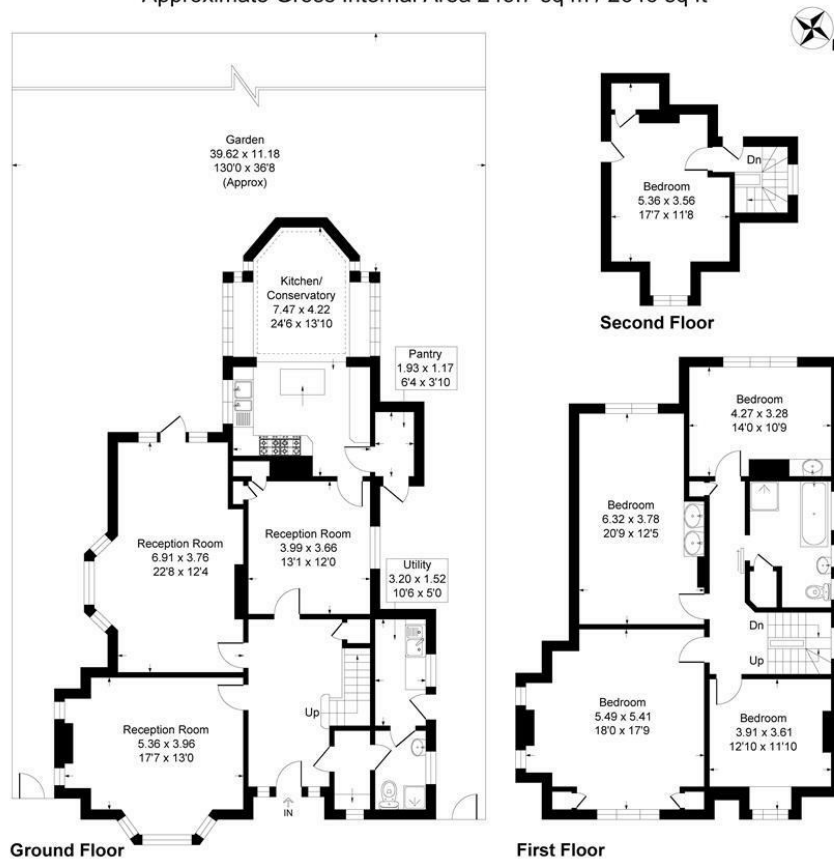
3





Hayes Road, BR2

Approximate Gross Internal Area 245.7 sq m / 2646 sq ft



This plan is for layout guidance only. Not drawn to scale unless stated. Windows and door openings are approximate. Whilst every care is taken in the preparation of this plan, please check all dimensions, shapes and compass bearings before making any decisions reliant upon them.
Produced By Planpix

LOCAL AUTHORITY

TENURE
Freehold

EPC RATING
D

COUNCIL TAX BAND
G

VIEWINGS
By prior appointment only

Energy Efficiency Rating		Current	Potential
<i>Very energy efficient - lower running costs</i>			
(92 plus) A			
(81-91) B			
(69-80) C			78
(55-68) D		60	
(39-54) E			
(21-38) F			
(1-20) G			
<i>Not energy efficient - higher running costs</i>			
England & Wales	EU Directive 2002/91/EC		

Agents Note: Whilst every care has been taken to prepare these particulars, they are for guidance purposes only. All measurements are approximate and are for general guidance purposes only and whilst every care has been taken to ensure their accuracy, they should not be relied upon and potential buyers/tenants are advised to recheck the measurements



OFFICE ADDRESS

23 High Street
Bromley
Kent
BR1 1LG

OFFICE DETAILS

0208 464 5566
info@sinclairhammelton.co.uk